

# EYE OF THE BEHOLDER II

## LEVEL MAPS

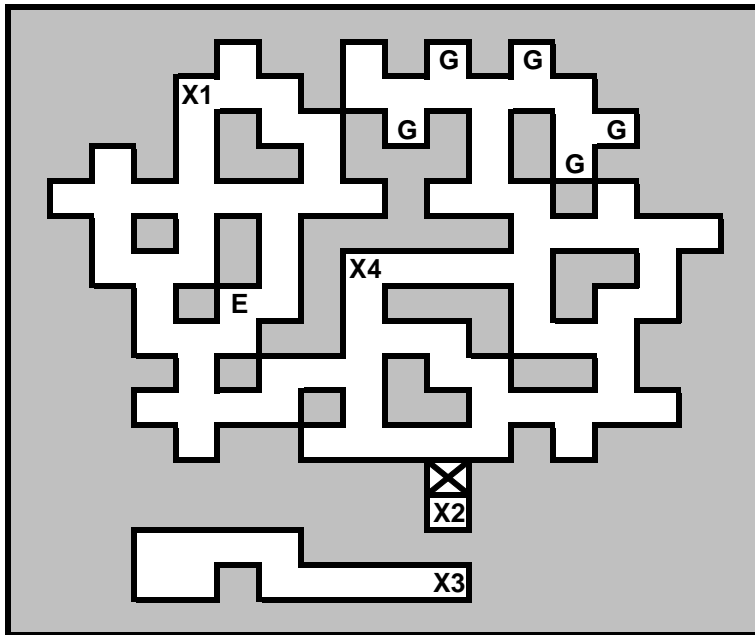
© 2005 Simon Osborne


The maps contained in this document were compiled from a variety of online sources, though mostly my own maps drawn while re-playing the game in February 2005.

My aim in creating these maps was to display all the relevant information for each level in an easy to understand guide for quick and easy reference. The solution maps I found online were not particularly user-friendly, so I decided to compile my own. While my maps are not as exhaustive regarding items and encounters as other resources, they contain all necessary information, such as where exits/portals/pits lead to, and what keys are required for which locks. This information is displayed in a readily usable and consistent manner throughout all the maps contained herein.

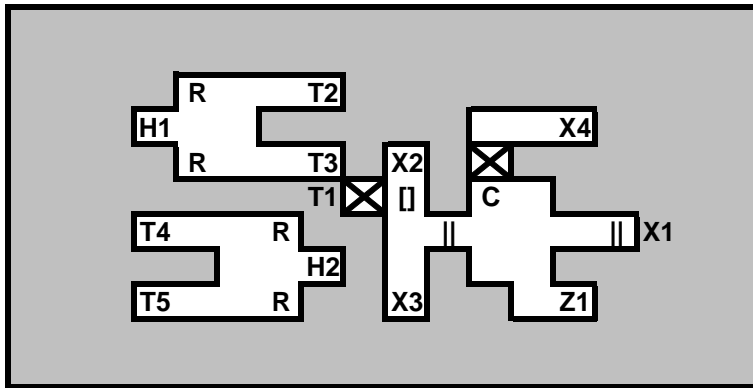
The maps are, to the best of my knowledge, complete and without error. If you think any of the information is wrong, please contact me at [ravensblade \(at\) ntlworld \(dot\) com](mailto:ravensblade@ntlworld.com) with any queries or corrections.

# Forest



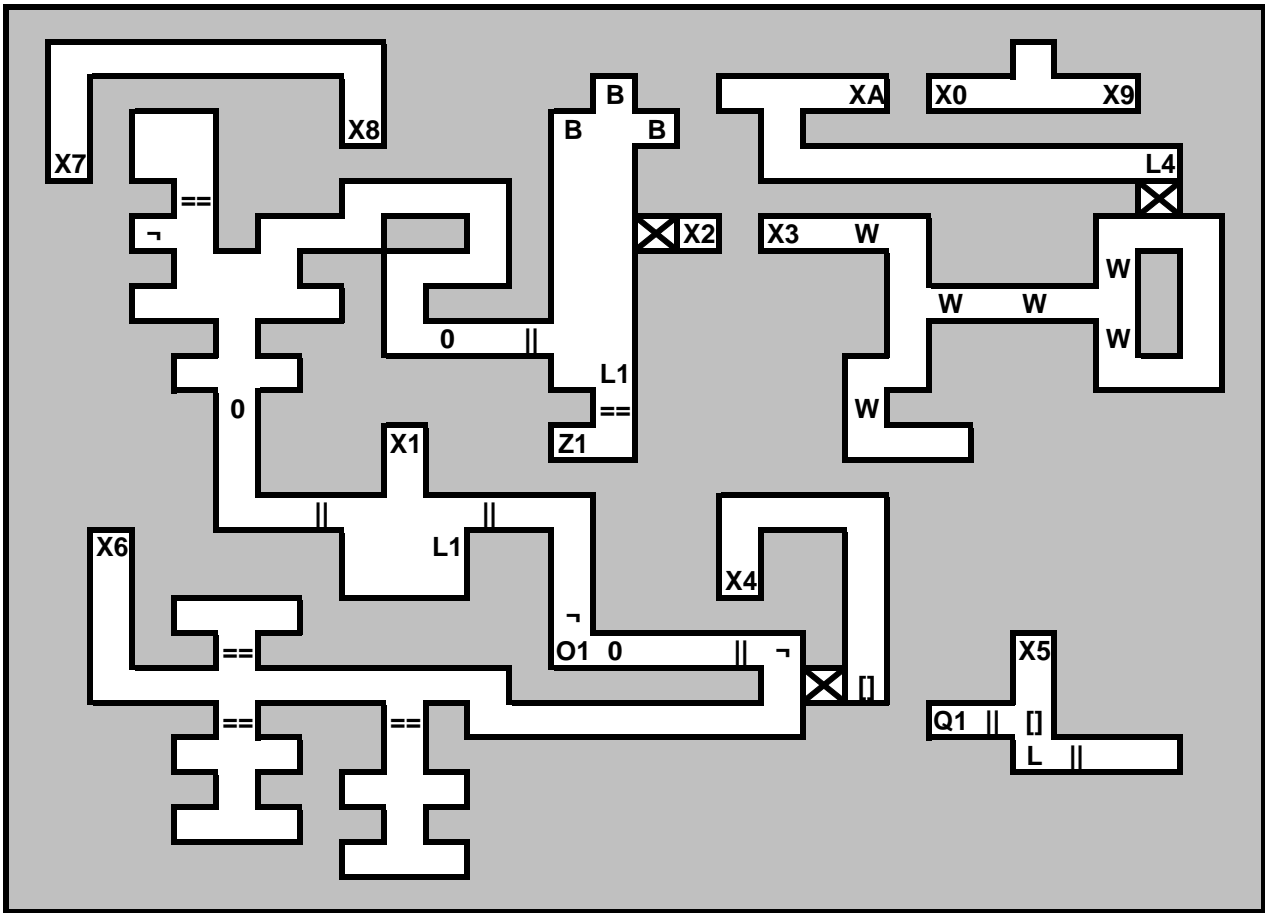
	Secret Wall	<b>X1</b>	Start Location
<b>E</b>	Old Woman	<b>X2</b>	Down To X3
<b>G</b>	Grave	<b>X3</b>	Up to X3
		<b>X4</b>	Darkmoon

# Temple



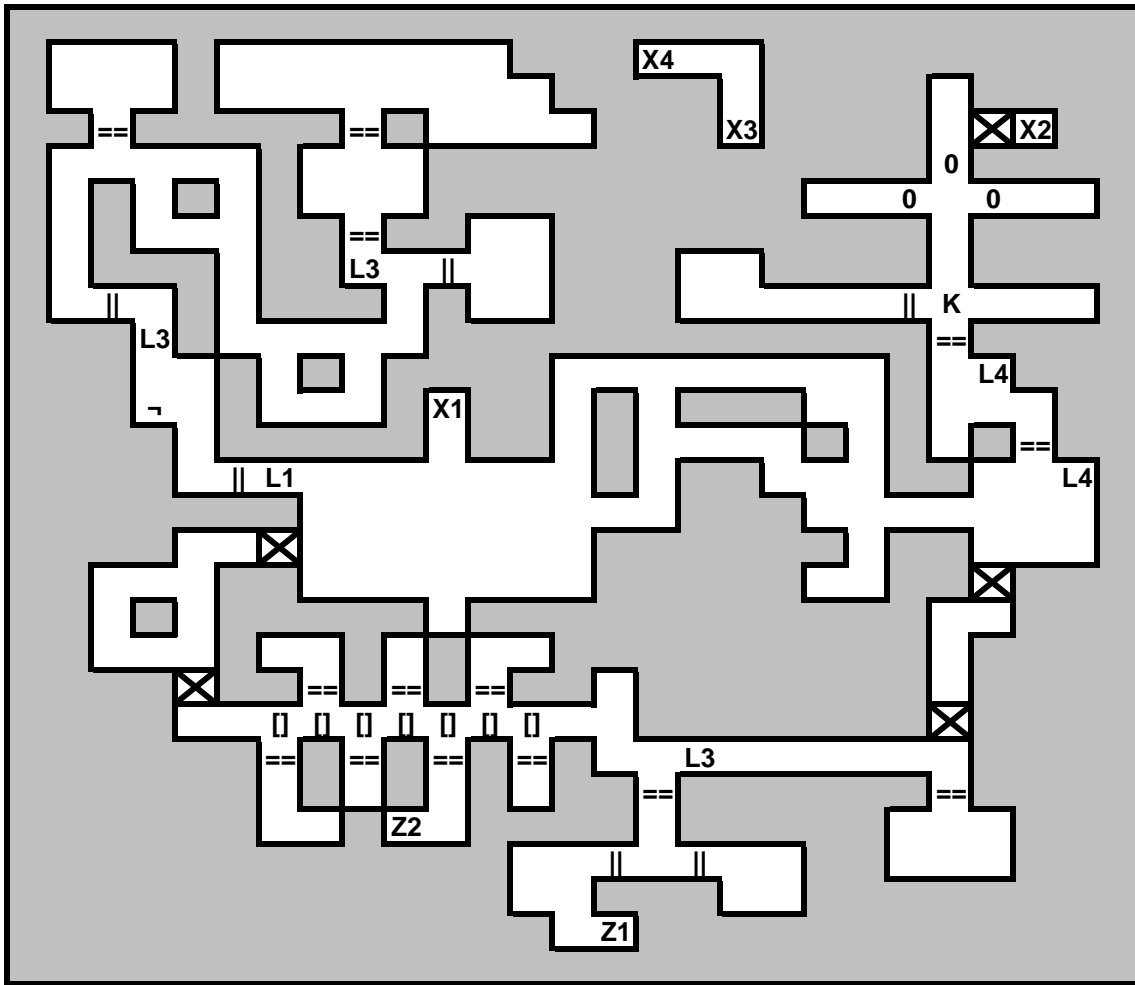
	Secret Wall	<b>H1</b>	Raise Dead Ankh
	Door	<b>H2</b>	Used Raise Dead Ankh
<b>C</b>	Carving	<b>R</b>	Runes
<b>T1</b>	To T3	<b>X1</b>	To Forest (X4)
<b>T2</b>	To T5	<b>X2</b>	To Temple Level 2 (X1)
<b>T3</b>	To T1	<b>X3</b>	To (Dungeon 1 (X1)
<b>T4</b>	To T2	<b>X4</b>	To Silver Tower 1 (X1)
<b>T5</b>	To T4	<b>Z1</b>	Adventuress

## Dungeon Level 1



<b> == </b>	Door	<b>L</b>	Lock	<b>X4</b>	Down to X5
<b>  </b>	Door	<b>L1</b>	Lock (Grey)	<b>X5</b>	Up to X4
<b>⊗</b>	Secret Wall	<b>L4</b>	Lock (Dark Moon)	<b>X6</b>	Down to X7
<b>□</b>	Button	<b>O1</b>	Pit to Q1	<b>X7</b>	Up to X6
<b>∩</b>	Lever	<b>Q1</b>	From Pit O1	<b>X8</b>	To Dungeon Level 2 (X1)
<b>0</b>	Pressure Pad	<b>X1</b>	To Temple (X3)	<b>X9</b>	To Dungeon Level 2 (X4)
<b>B</b>	Barrel	<b>X2</b>	Web	<b>X0</b>	Up to XA
<b>W</b>	Web	<b>X3</b>	Up to X2	<b>XA</b>	Down to X0
<b>Z1</b>	Insal (Halfling)				

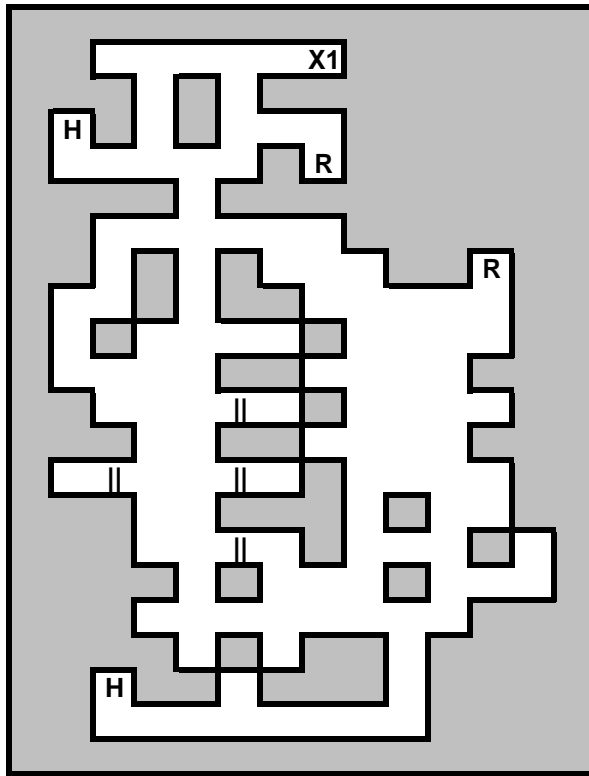
## Dungeon Level 2



	Door	<b>L1</b>	Lock	<b>X1</b>	To Dungeon Level 1 (X8)
	Door	<b>L3</b>	Lock (Skull)	<b>X2</b>	To Dungeon Level 3 (X1)
	Secret Wall	<b>L4</b>	Lock (Dark Moon)	<b>X3</b>	To Dungeon Level 3 (X5)
	Button	<b>Z1</b>	Calandra (Fighter)	<b>X4</b>	To Dungeon Level 1 (X9)
<b>0</b>	Pressure Pad	<b>Z2</b>	Dwarf Captive	<b>K</b>	Khelben



# Dungeon Level 4



Door

R

Scratches

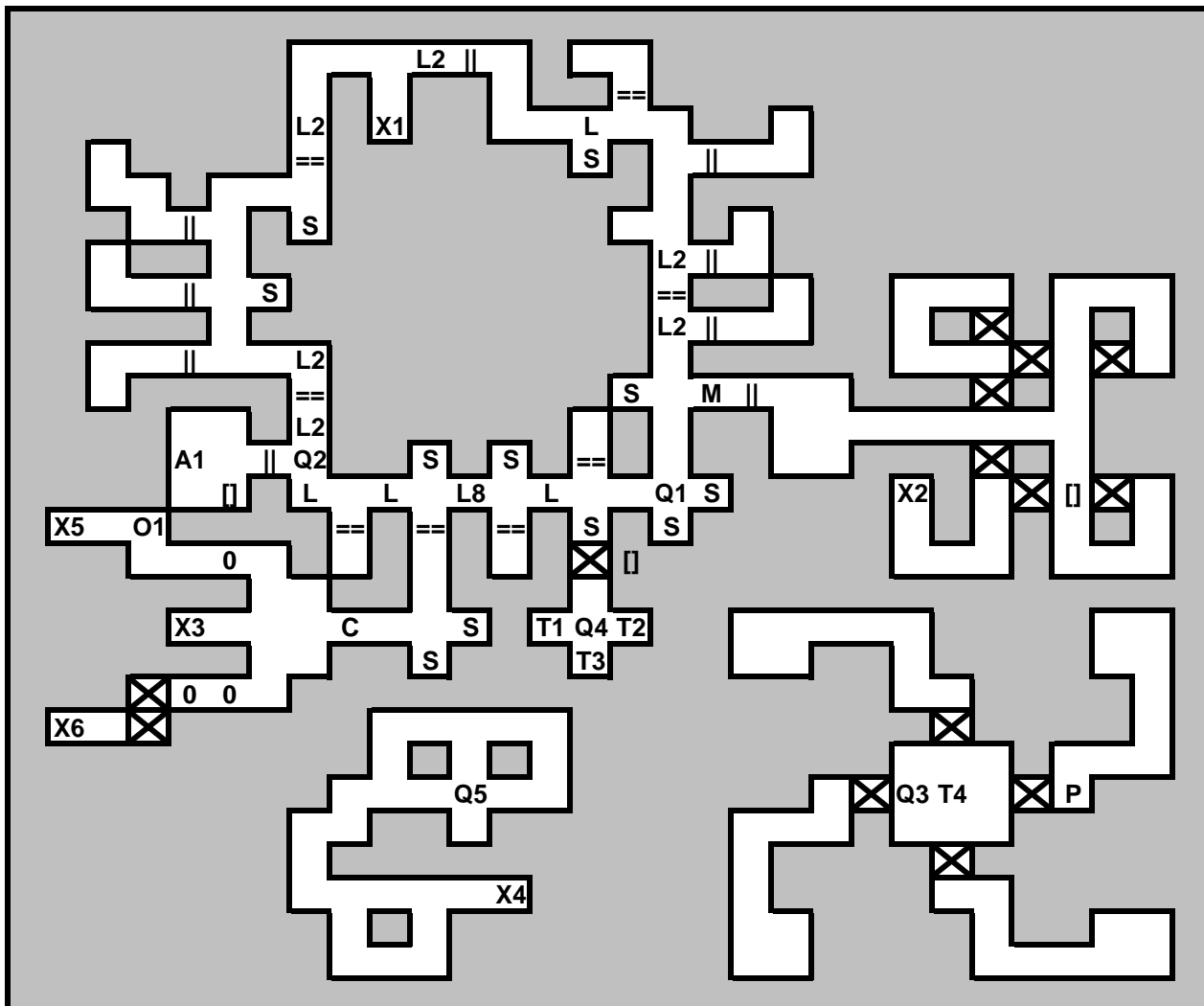
H

Hole

X1

To Dungeon Level 3 (X2)

## Temple Level 2



Door



Door



Secret Wall

0

Pressure Pad

T1

Teleport to Q1

T2

Teleport to Q2

T3

Teleport to Q3

T4

Teleport to Q4

Q1

From T1

Q2

From T2

Q3

From T3

Q4

From T4

Q5

From Pit O1

C

Carving

A1

Portal from Dungeon Level 3 (A1) and  
Crystal Tower Level 5 (A1)

L

Lock

L2

Lock (Copper)

L8

Lock (Crimson)

S

Bat Statuettes

M

Magic Mouth (Mark of Darkmoon)

P

Trap

X1

To Temple Level 1 (X2)

X2

To Crystal Tower Level 1 (X1)

X3

Down to X4

X4

Up to X3

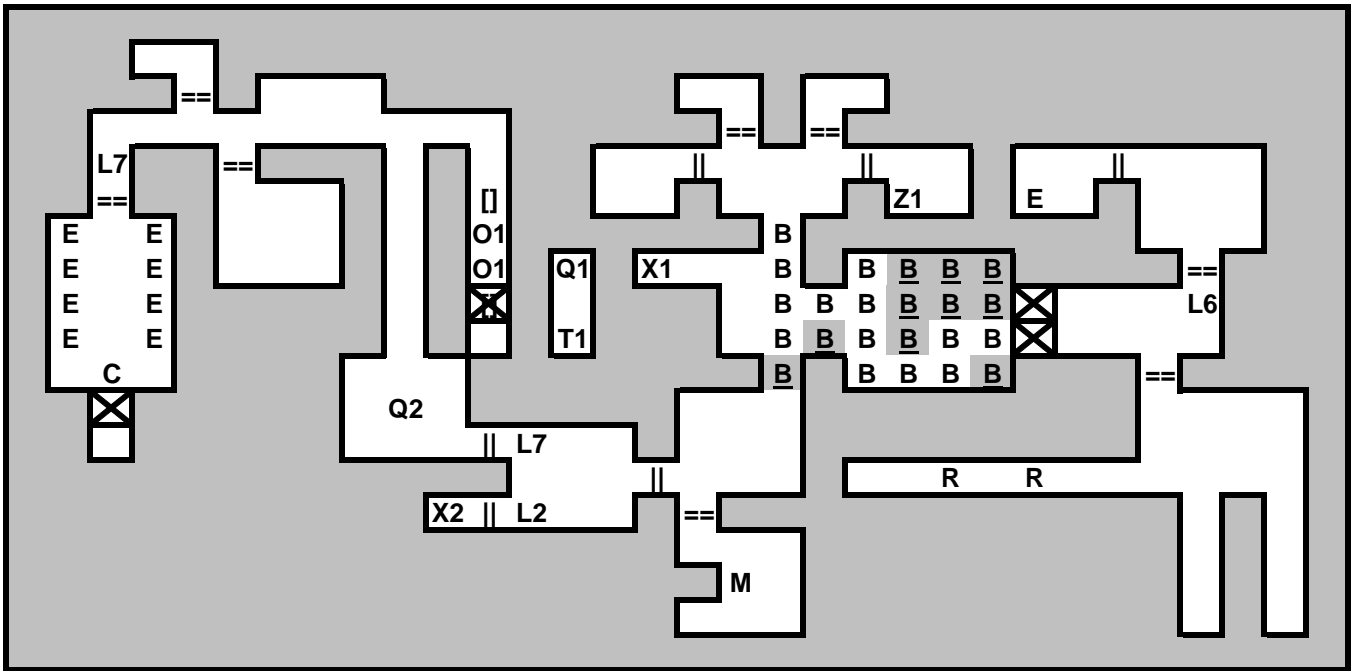
X5

To North Talon Tower (X1)

X6

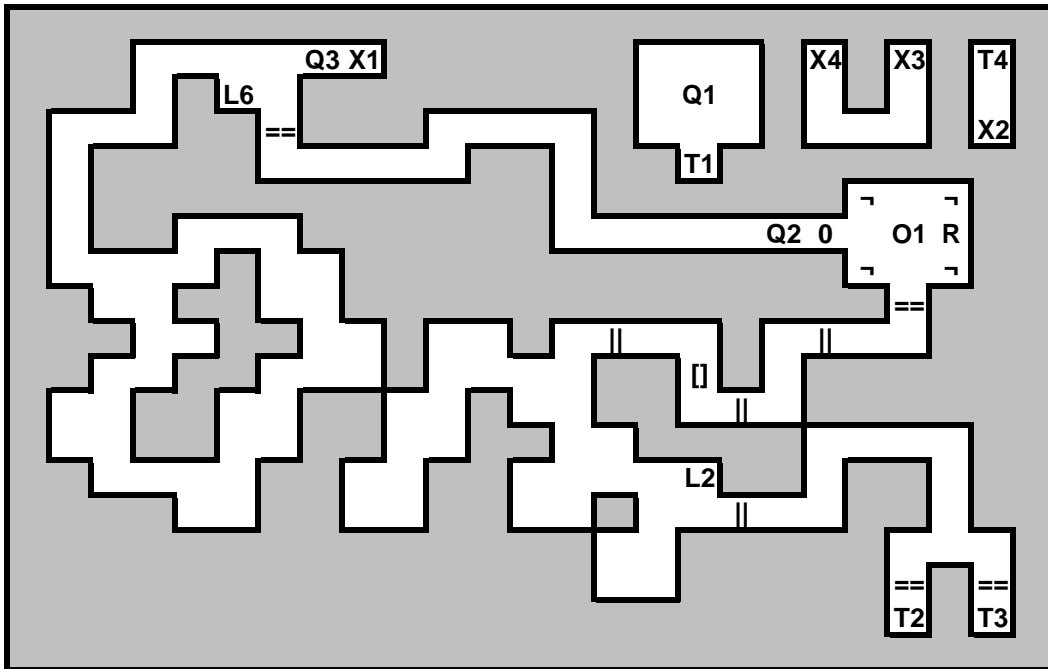
To South Talon Tower Level 1 (X1)

# Silver Tower Level 1



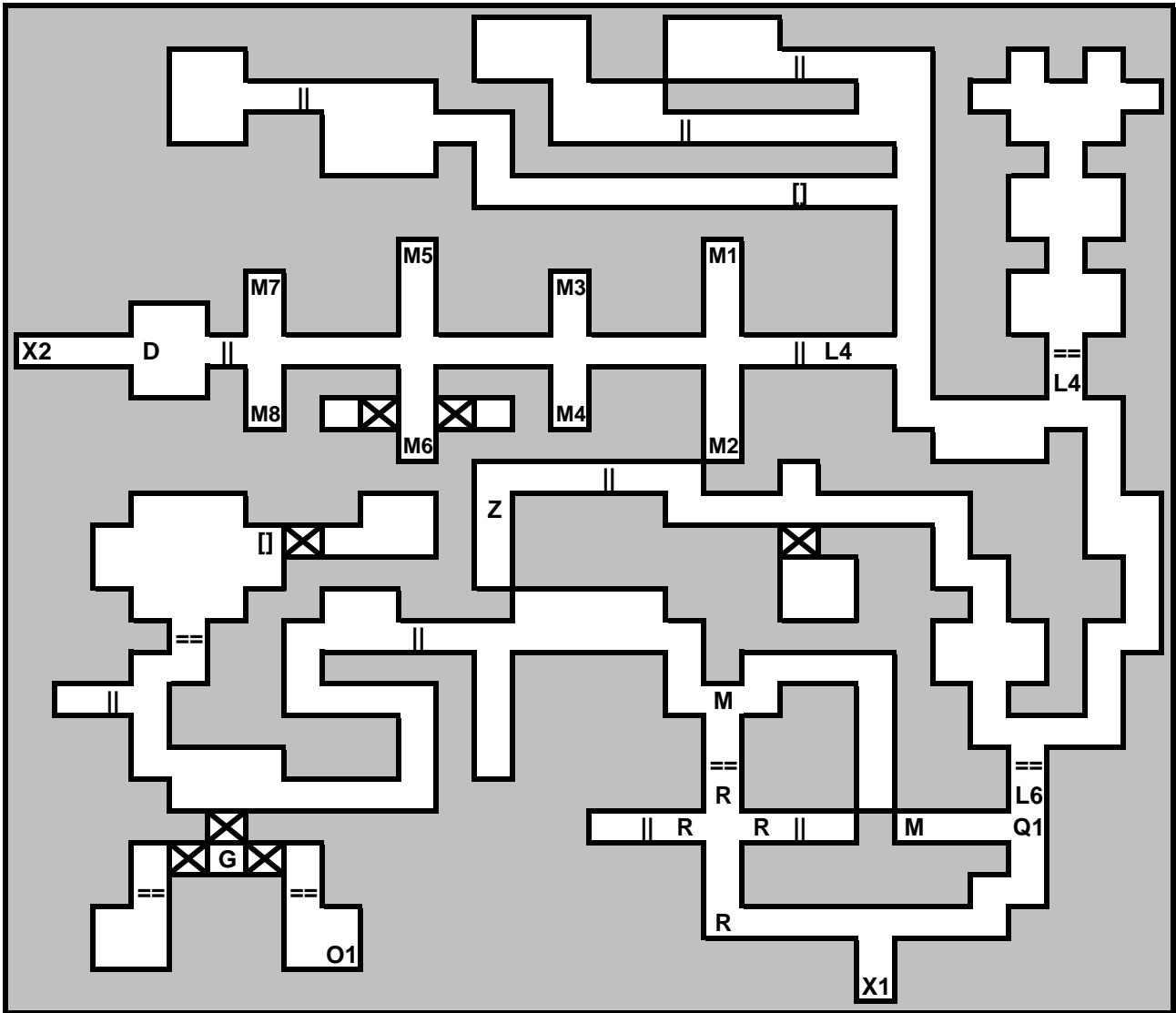
	Door	<b>C</b>	Carving	<b>O1</b>	Pit to Q1
	Door	<b>E</b>	Egg	<b>Q1</b>	From Pit O1
	Secret Wall	<b>L2</b>	Lock (Copper)	<b>Q2</b>	From T1
	Button	<b>L6</b>	Lock (Bone)	<b>T1</b>	Teleport to Q2
<b>0</b>	Pressure Pad	<b>L7</b>	Lock (Mantis)	<b>X1</b>	To Temple (X4)
<b>B</b>	Moving Beam	<b>M</b>	Magic Mouth	<b>X2</b>	To Silver Tower Level 2 (X1)
<b>B</b>	Static Beam	<b>R</b>	Rune	<b>Z1</b>	Taglor (Dwarf)

## Silver Tower Level 2



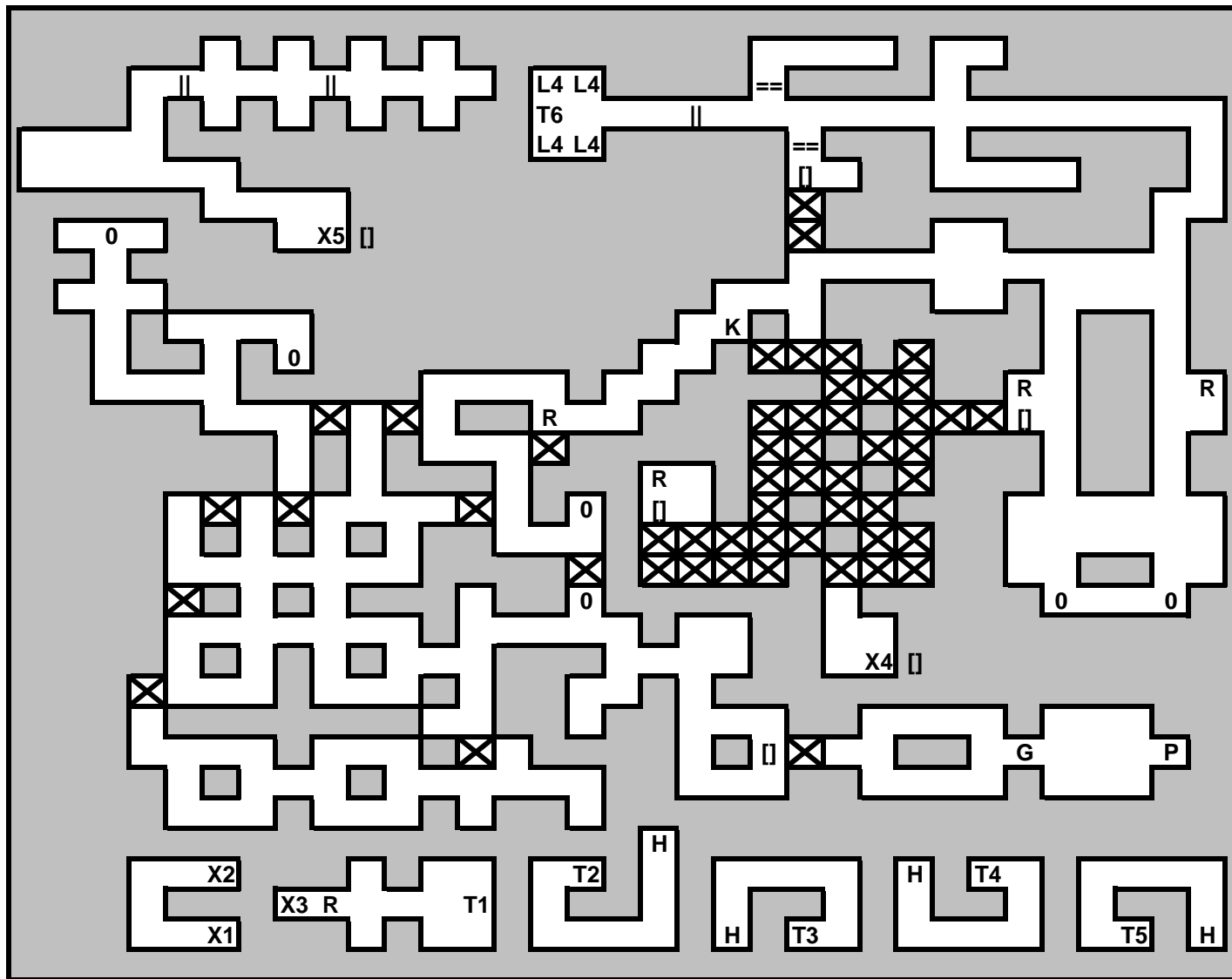
	Door	<b>T1</b>	Teleport to Q2	<b>Q3</b>	From T3
	Door	<b>T2</b>	Teleport to T4	<b>R</b>	Runes
	Button	<b>T3</b>	Teleport to Q3	<b>X1</b>	To Silver Tower Level 1 (X2)
	Lever	<b>T4</b>	Teleport to T2	<b>X2</b>	Up to X3
<b>0</b>	Pressure Pad	<b>O1</b>	Pit to Q1	<b>X3</b>	Down to X2
<b>L2</b>	Lock (Copper)	<b>Q1</b>	From O1	<b>X4</b>	To Silver Tower Level 3 (X1)
<b>L6</b>	Lock (Bone)	<b>Q2</b>	From T1		

### Silver Tower Level 3



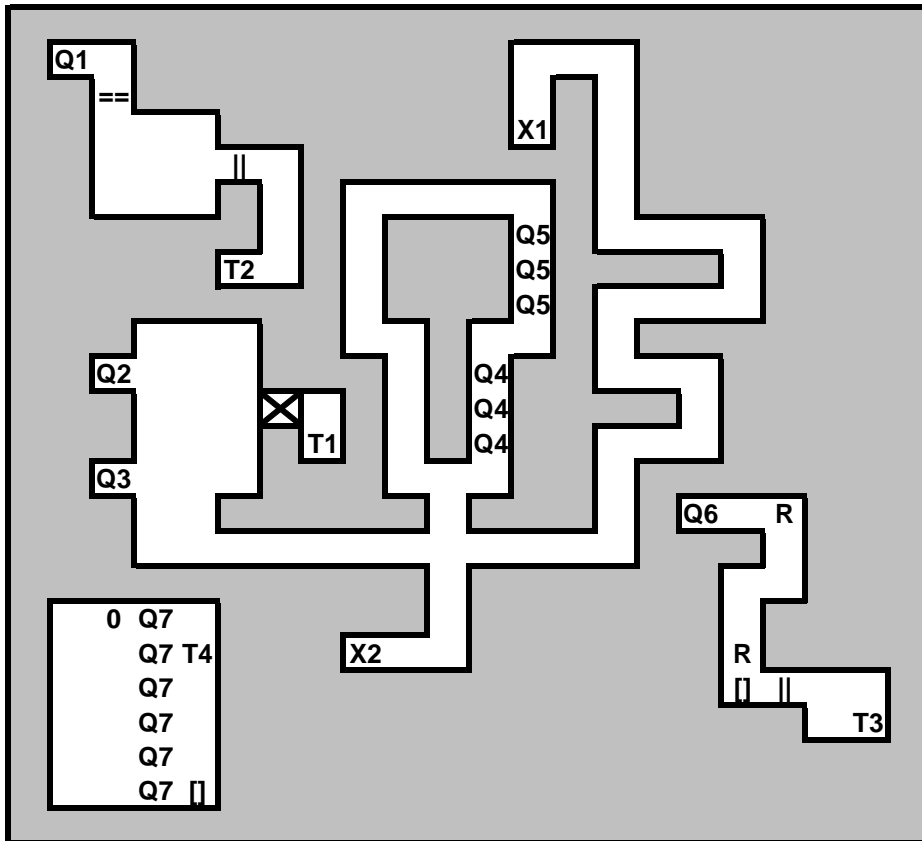
	Door	<b>M</b>	Magic Mouth
	Door	<b>M1</b>	Magic Mouth (Rotten Food)
	Secret Wall	<b>M2</b>	Magic Mouth (5 Rocks)
	Button	<b>M3</b>	Magic Mouth (Mantis Idol)
<b>D</b>	Dran Draggore	<b>M4</b>	Magic Mouth (Red Gem)
<b>G</b>	Ghostly Priestess	<b>M5</b>	Magic Mouth (Re-opens Door)
<b>L4</b>	Lock (Darkmoon)	<b>M6</b>	Magic Mouth (Long Sword "Hunger")
<b>L6</b>	Lock (Bone)	<b>M7</b>	Magic Mouth (Potion)
<b>O1</b>	Pit to Q1	<b>M8</b>	Magic Mouth (Scroll)
<b>Q1</b>	From Pit O1	<b>X1</b>	To Silver Tower Level 2 (X4)
<b>R</b>	Rune	<b>X2</b>	To Silver Tower Level 4 (X1)
<b>Z</b>	Cleric (Trap)		

## Silver Tower Level 4



	Door	<b>K</b>	Khelben	<b>P</b>	Pedestal (Mark of Darkmoon) Teleport to Temple Level 1
	Door	<b>T1</b>	Teleport Randomly to T2 - T6	<b>X1</b>	To Silver Tower Level 3 (X2)
	Secret Wall	<b>T2</b>	Teleport Randomly to T1 - T6	<b>X2</b>	Up to X3
	Button	<b>T3</b>	Teleport Randomly to T1 - T6	<b>X3</b>	Down to X2
<b>0</b>	Pressure Pad	<b>T4</b>	Teleport Randomly to T1 - T6	<b>X4</b>	Up to X5
<b>G</b>	Ghostly Priestess	<b>T5</b>	Teleport Randomly to T1 - T6	<b>X5</b>	Pit to X4
<b>H</b>	Giant Hand	<b>T6</b>	Teleport Randomly to T1 - T5		
<b>L4</b>	Lock (Darkmoon)	<b>R</b>	Runes		

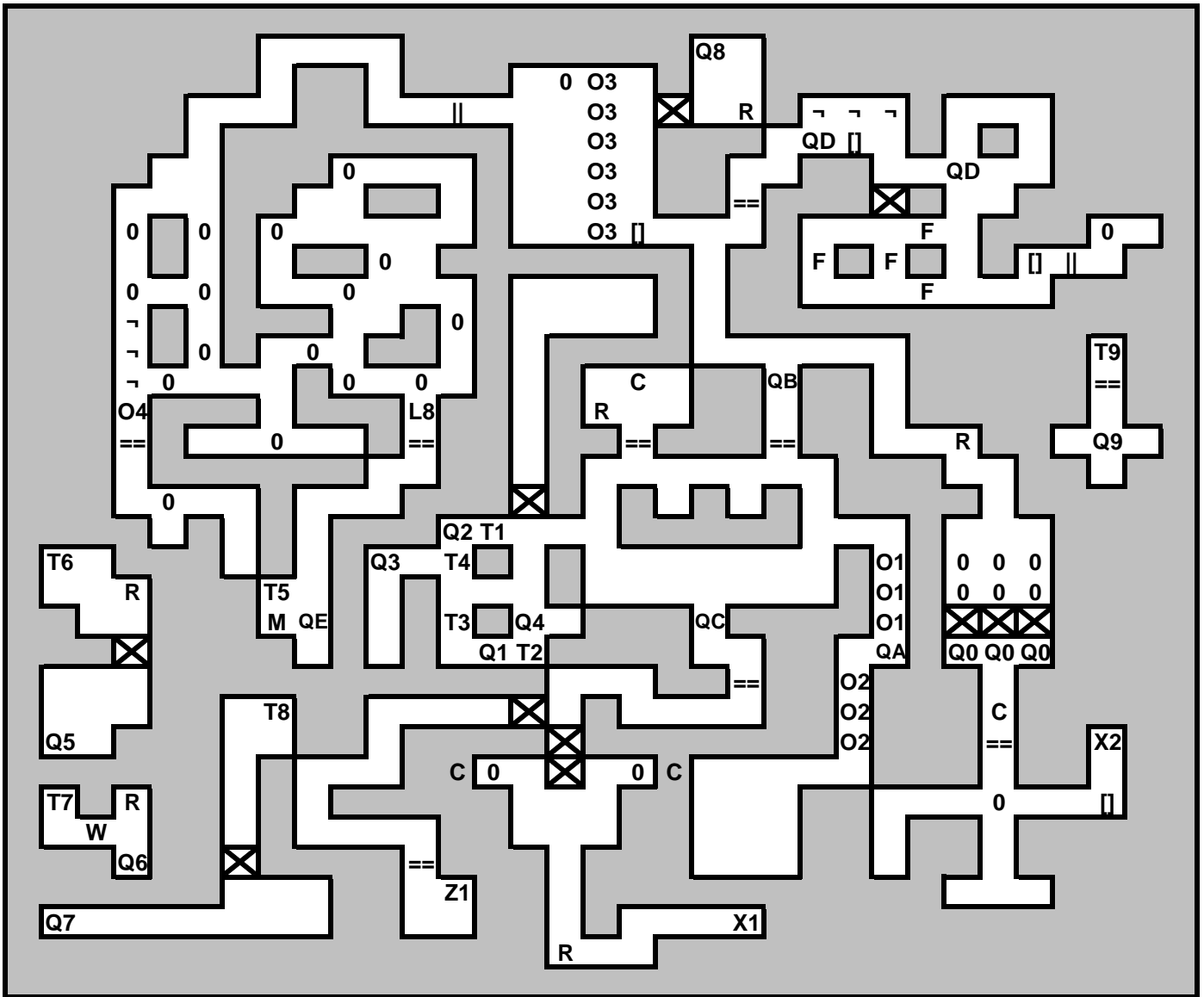
# Crystal Tower Level 1



0 Q7  
 Q7 T4  
 Q7  
 Q7  
 Q7  
 Q7 []

	Door	<b>Q1</b>	From T1
	Door	<b>Q2</b>	From T2
	Secret Wall	<b>Q3</b>	From T3
	Button	<b>Q4</b>	From Pit Crystal Tower 2 (O2)
<b>0</b>	Pressure Pad	<b>Q5</b>	From Pit Crystal Tower 2 (O1)
<b>R</b>	Runes	<b>Q6</b>	From Pit Crystal Tower 2 (O4)
<b>T1</b>	Teleport to Q1	<b>Q7</b>	From Pit Crystal Tower 2 (O3)
<b>T2</b>	Teleport to Q2	<b>X1</b>	To Temple Level 2 (X2)
<b>T3</b>	Teleport to Q3	<b>X2</b>	To Crystal Tower Level 2 (X1)
<b>T4</b>	Teleport to Q3		

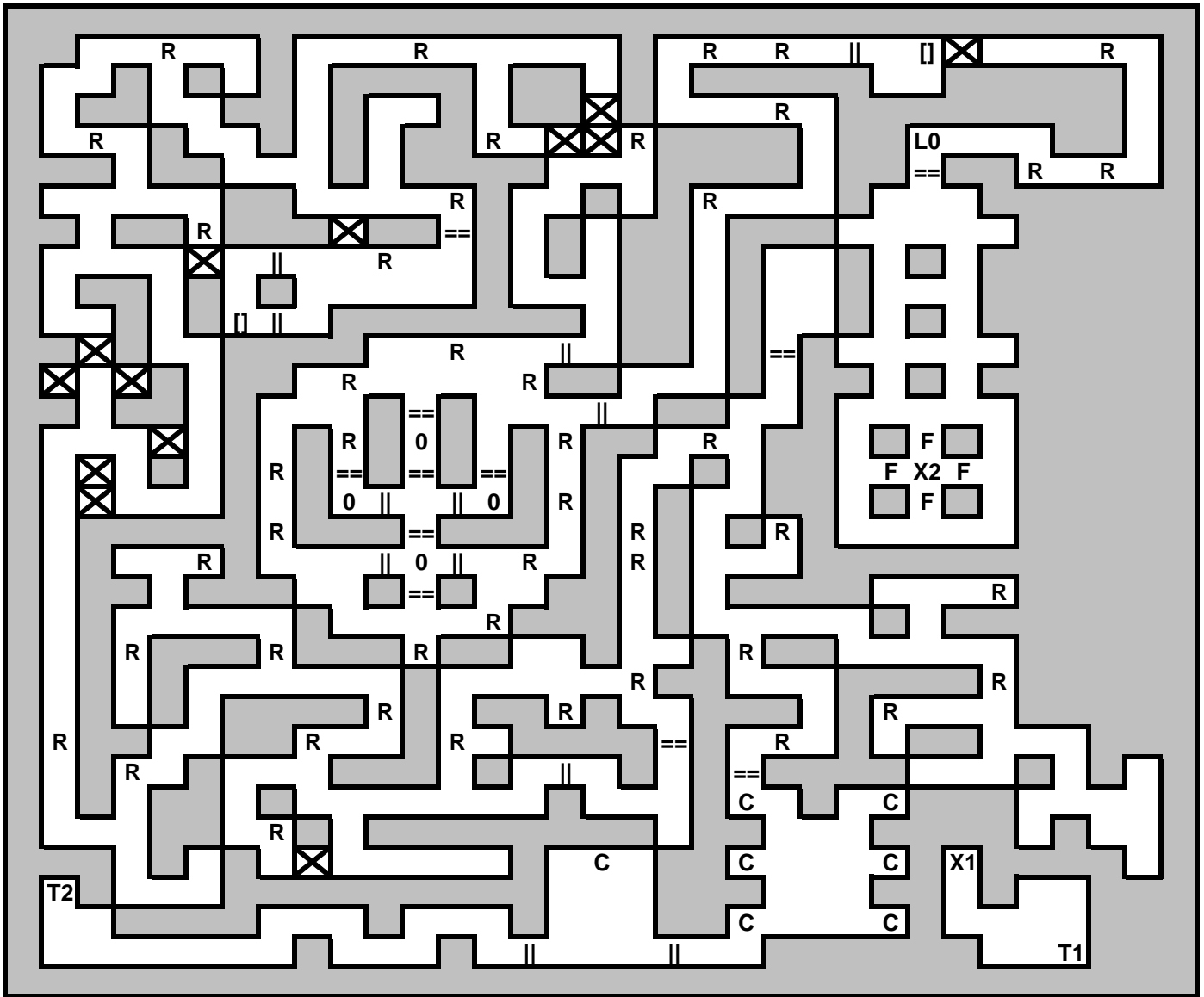
## Crystal Tower Level 2



<p> Door</p> <p> Door</p> <p> Secret Wall</p> <p> Lever</p> <p> Button</p> <p><b>0</b> Pressure Pad</p> <p><b>C</b> Carving</p> <p><b>F</b> Wall of Force</p> <p><b>L8</b> Lock (Shell)</p> <p><b>L9</b> Lock (Crystal)</p> <p><b>M</b> Magic Mouth</p> <p><b>R</b> Runes</p> <p><b>W</b> Wailing Wall</p> <p><b>Z1</b> Alain</p>	<p><b>T1</b> Teleport to Q1</p> <p><b>T2</b> Teleport to Q2</p> <p><b>T3</b> Teleport to Q3</p> <p><b>T4</b> Teleport to Q4</p> <p><b>T5</b> Teleport to Q5 or Q9</p> <p><b>T6</b> Teleport to Q6</p> <p><b>T7</b> Teleport to Q7</p> <p><b>T8</b> Teleport to Q8</p> <p><b>T9</b> Teleport to QE</p> <p><b>O1</b> Pit to Silver Tower Level 1 (Q5)</p> <p><b>O2</b> Pit to Silver Tower Level 1 (Q4)</p> <p><b>O3</b> Pit to Silver Tower Level 1 (Q7)</p> <p><b>O4</b> Pit to Silver Tower Level 1 (Q6)</p> <p><b>X1</b> To Crystal Tower Level 1 (X2)</p> <p><b>X2</b> To Crystal Tower Level 3 (X1)</p>	<p><b>Q1</b> From T1</p> <p><b>Q2</b> From T2</p> <p><b>Q3</b> From T3</p> <p><b>Q4</b> From T4</p> <p><b>Q5</b> From T5</p> <p><b>Q6</b> From T6</p> <p><b>Q7</b> From T7</p> <p><b>Q8</b> From T8</p> <p><b>Q9</b> From T5</p> <p><b>Q0</b> From Silver Tower Level 3 (O2, O3)</p> <p><b>QA</b> From Silver Tower Level 3 (O1)</p> <p><b>QB</b> From Silver Tower Level 3 (O4)</p> <p><b>QC</b> From Silver Tower Level 3 (O5)</p> <p><b>QD</b> From Silver Tower Level 5 (O1)</p> <p><b>QE</b> From T9</p>
-----------------------------------------------------------------------------------------------------------------------------------------------------------------------------------------------------------------------------------------------------------------------------------------------------------------------------------	-------------------------------------------------------------------------------------------------------------------------------------------------------------------------------------------------------------------------------------------------------------------------------------------------------------------------------------------------------------------------------------------------------------------------------------------------------------------------------------------------------------------------------------------------------------------------------------------------------------	---------------------------------------------------------------------------------------------------------------------------------------------------------------------------------------------------------------------------------------------------------------------------------------------------------------------------------------------------------------------------------------------------------------------------------------------------------------------------------------------------------------

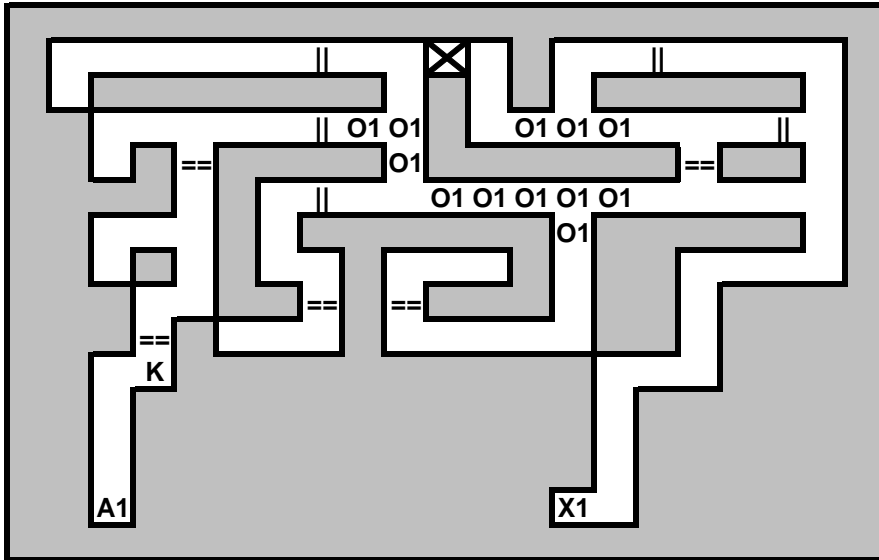


# Crystal Tower Level 4



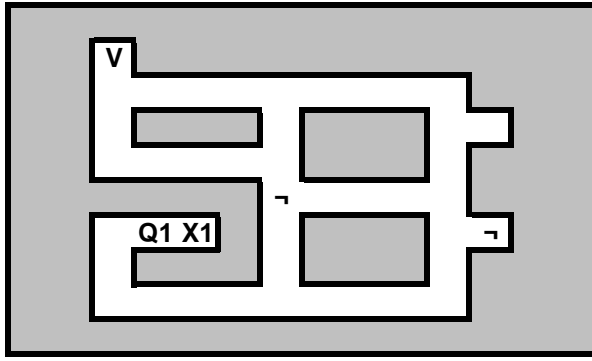
	Door	<b>L0</b>	Lock (Tooth)
	Door	<b>R</b>	Scratches
	Secret Wall	<b>T1</b>	To T2
<b>0</b>	Pressure Pad	<b>T2</b>	To T1
<b>C</b>	Carving	<b>X1</b>	To Crystal Tower Level 3 (X0)
<b>F</b>	Wall of Force	<b>X2</b>	Pit to Crystal Tower Level 5 (X1)

# Crystal Tower Level 5

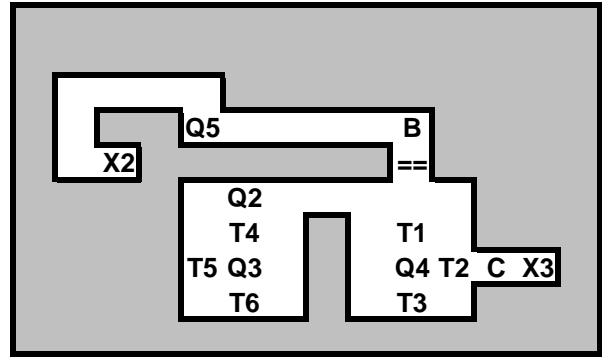


	Door	<b>K</b>	Frost Giant King
	Door	<b>O1</b>	Pit to Crystal Tower Level 2 (QD)
	Secret Wall	<b>X1</b>	Pit from Crystal Tower Level 4 (X2)
<b>A1</b>	Portal to Temple Level 2 (A1)		

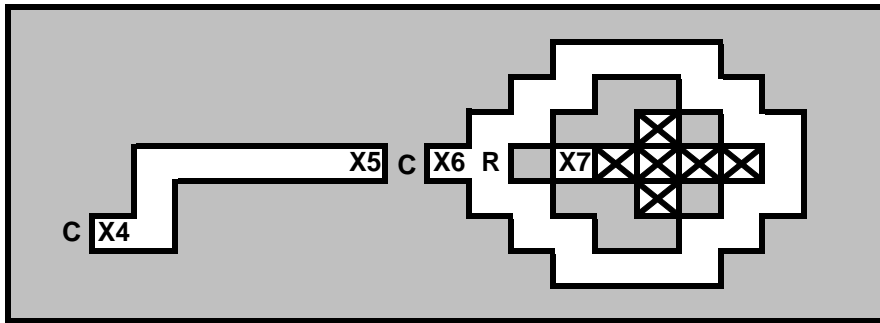
### North Talon Tower



### South Talon Tower

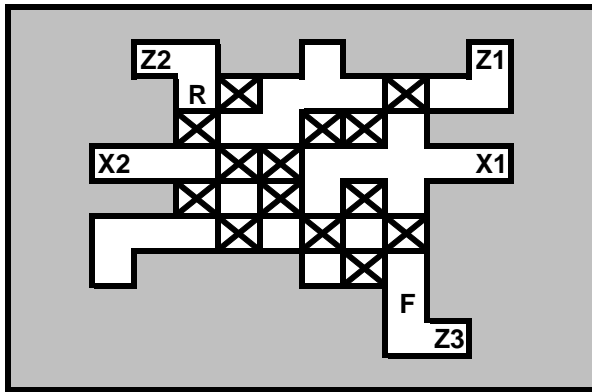


### South Talon Tower Level 2

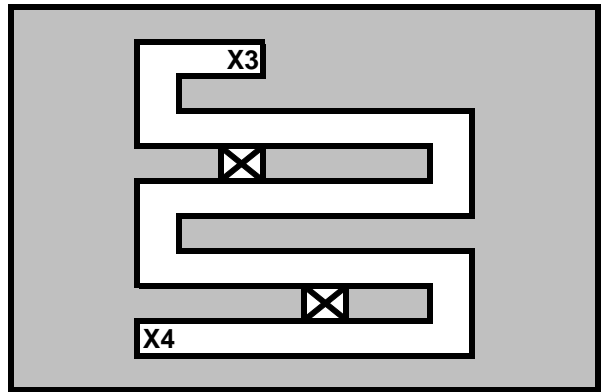


	Door	<b>Q1</b>	From T5
	Door	<b>Q2</b>	From T1
	Secret Wall	<b>Q3</b>	From T2 or T3
	Lever	<b>Q4</b>	From T4
<b>B</b>	Banner	<b>Q5</b>	From T6
<b>C</b>	Carving	<b>V</b>	Alcove (Fire Globes)
<b>R</b>	Runes	<b>X1</b>	To Temple Level 2 (X5)
<b>V</b>	Alcove (Fire Globes)	<b>X2</b>	To Temple Level 2 (X6)
<b>T1</b>	Teleport to Q2	<b>X3</b>	To South Talon Tower Level 2 (X4)
<b>T2</b>	Teleport to Q3	<b>X4</b>	To South Talon Tower Level 1 (X3)
<b>T3</b>	Teleport to Q3	<b>X5</b>	To X6
<b>T4</b>	Teleport to Q3	<b>X6</b>	To X5
<b>T5</b>	Teleport to Q3	<b>X7</b>	To South Talon Tower Level 3 (X1)
<b>T6</b>	Teleport to Q3		

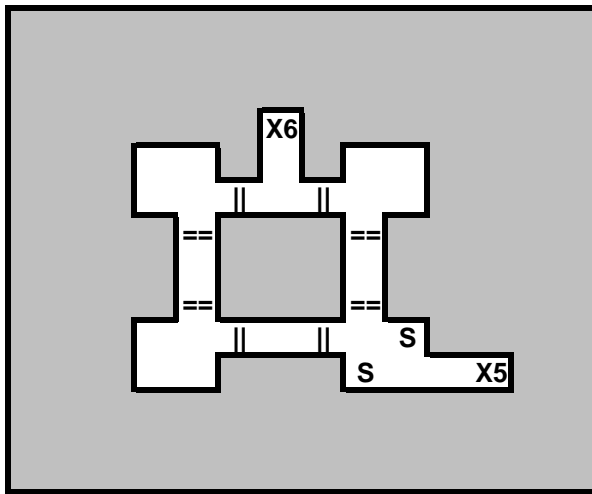
South Talon Tower 3



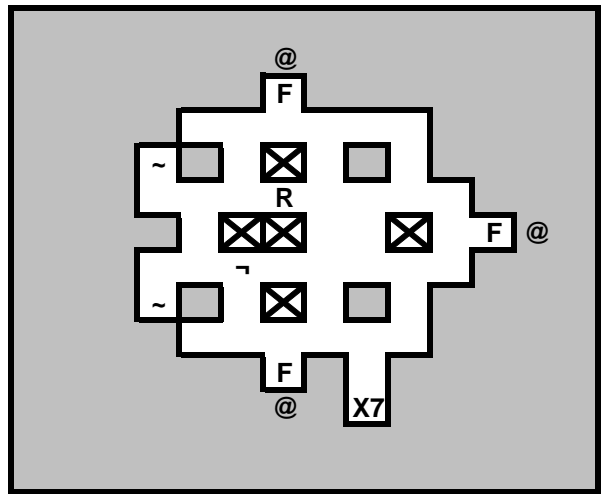
South Talon Tower 4



South Talon Tower 5



South Talon Tower 6



Door



Door



Secret Wall



Lever (Teleport to Talon Tower Level 7 (Q1))



Circular Moveable Dial



Fire Globe Socket



Wall of Force

**Z1**

Adventurer Statue

**Z2**

Giant King

**Z3**

Insal (Captured)

**S**

Coin Slot

**R**

Runes

**X1**

To Talon Tower Level 2 (X7)

**X2**

To Talon Tower Level 4 (X3)

**X3**

To Talon Tower Level 3 (X2)

**X4**

To Talon Tower Level 5 (X5)

**X5**

To Talon Tower Level 4 (X4)

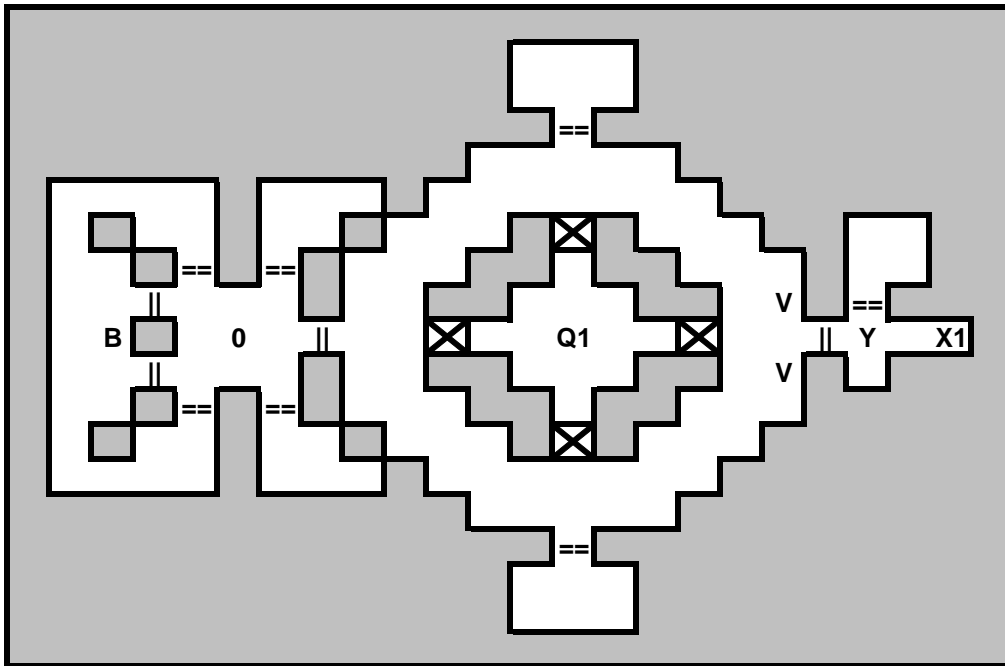
**X6**

To Talon Tower Level 6 (X7)

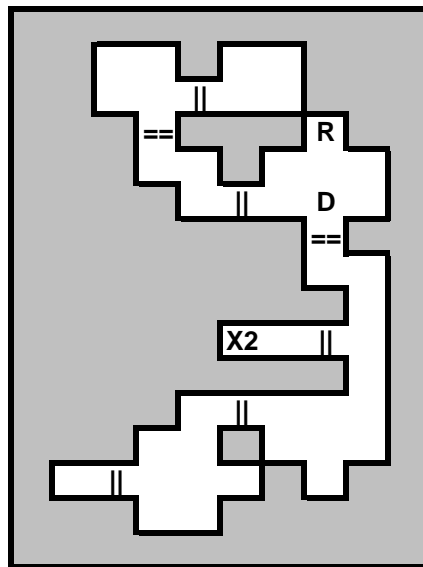
**X7**

To Talon Tower Level 5 (X6)

### Talon Tower Level 7



### Talon Tower Level 8



	Door	<b>R</b>	Altar
	Door	<b>V</b>	Amulet Alcoves (Force Field)
	Secret Wall	<b>Y</b>	Dying Cleric
<b>0</b>	Pressure Pad	<b>X1</b>	To Talon Tower Level 8 (X2)
<b>B</b>	Crystal Ball	<b>X2</b>	To Talon Tower Level 7 (X1)
<b>D</b>	Dran Draggore		